

Our Purposes

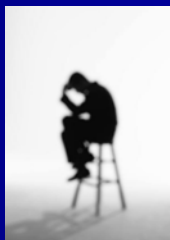


Why Connect?



Why Connect?

*How You **Think** About **Ethics**
Determines Your
Leadership **Behavior**,
Your **Effectiveness**, and
Your **Reputation***



Why Connect?



You have discretionary judgment
Leaders make tough decision
Decisions should be based on
principles!

Please . . .



- *Engage*
- *Argue*
- *Listen*
- *Look for insights*









Got Ethics?

A Question

*Can **You** Identify, Articulate, And
Defend **Your** Ethical Beliefs and
Principles?*



A Question

*What is the **criteria** you rely
upon to determine what is
and is not ethical?*



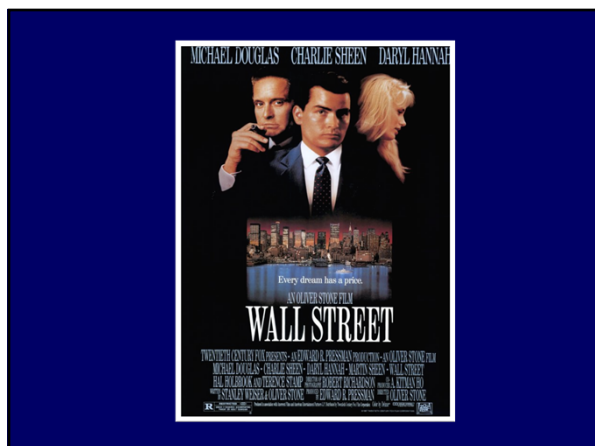


A Question

*What is **your** definition of **ethics**?*

Jot down a phrase as I say the words





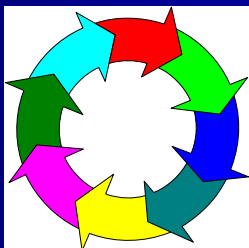
Ethics

- Study of right and wrong
- Principles of how we ought to live our lives and treat other people



Ethics Occurs At Several Different Levels

- Personal
- Cultural
- Societal
- Professional
- Generational
- Organizational



Have an Opinion?



- Abortion?
- Same Sex Marriage?
- Assisted Suicide?
- School Prayer?
- Capital Punishment?
- Gun Control?
- Stem Cell Research?



Where Do Your Ethical Beliefs Come From?

- Parents?
- Peers?
- Formal Education?
- Church?
- Worldly Experience?
- The Media?
- Emotions?
- Reflective Judgment?





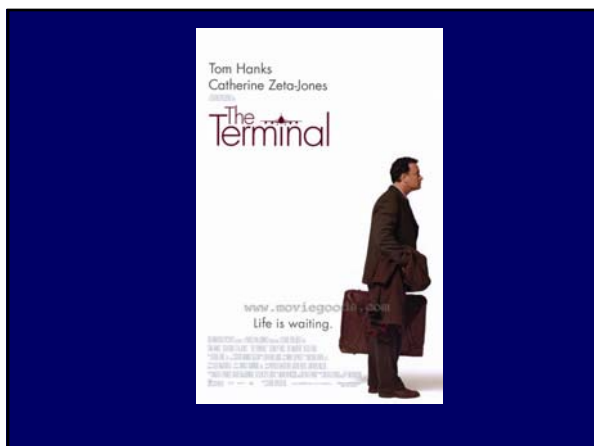
Ethics Grand Jury

- Your job is to decide what is and is not ethical.
- Assume facts are true.
- Apply your ethics to the situation.
- Vote based on your ethics.

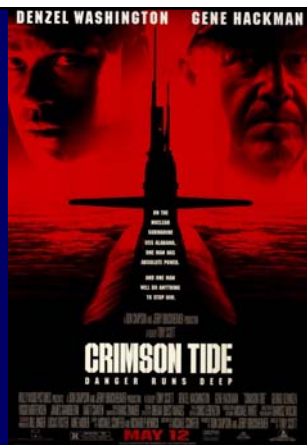


A Question ?

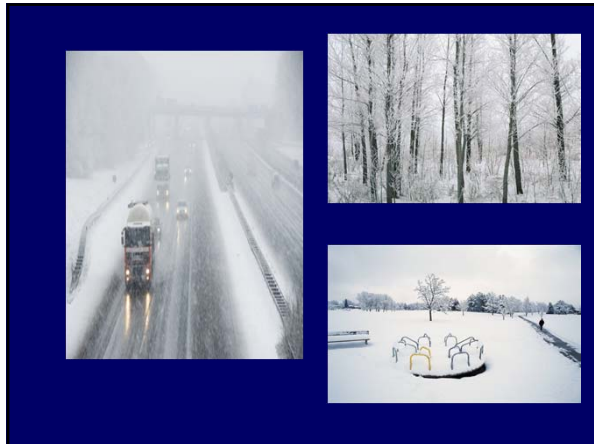
What do your
thoughts and **feelings**
tell you about the nature of
your personal ethics?












A Question



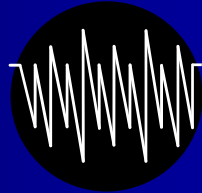
Why do good people act unethically?

2 Primary Reasons

- Inability to control our emotions.
- Self-preservation/self-interest

Emotional Reactions

- Strong Emotional Reactions
- Unthinking Responses
- Hot Spots
- Emotional Trigger

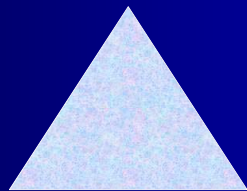


Socrates

Ethos

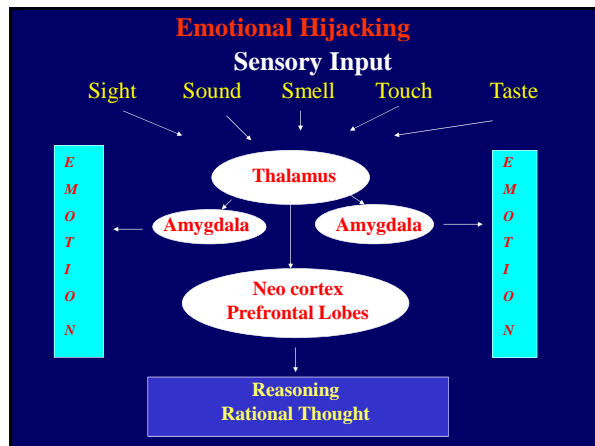
Pathos

Logos



Recent Advancements

- Molecules of Emotion
- Neural Pathways
- The Emotional Hijack



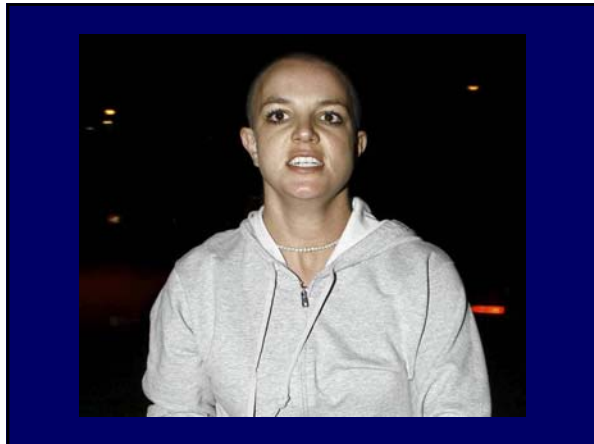




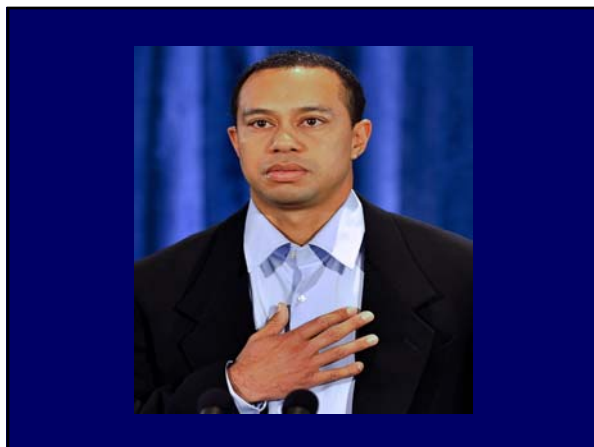


















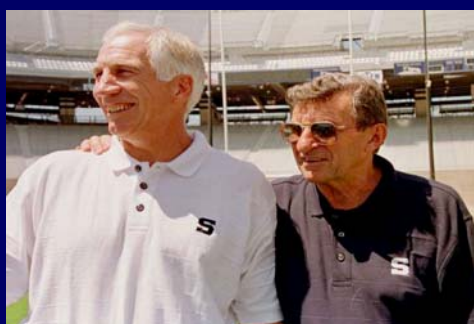
















Harvard Experiment

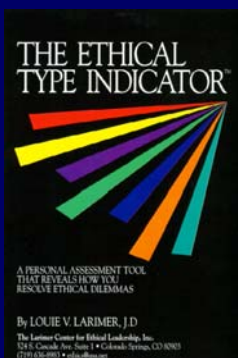


Scenario 1



Scenario 2

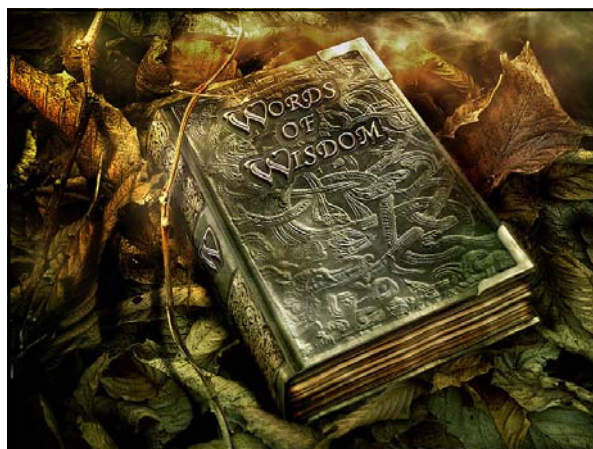




- Not a Clinical Tool
- Helps to Look Within
- Self-Discovery Tool







Ethics



Integrity



Character



Character



Ethics, Integrity, Trust Credibility and Character

Ethics	Beliefs regarding what is right and wrong
Integrity	Extent to which you follow your beliefs
Trust	Feeling of being vulnerable to someone
Credibility	Belief that your word is good
Character	Inner self and how people judge you
